



**Virgin Islands Shipping Registry**

2nd Floor RG Hodge Plaza, PO Box 4751, Road Town, Tortola, VG1110, Virgin Islands  
Tel: +1 284 468 9646 • General Email: [vishipping@gov.vg](mailto:vishipping@gov.vg)

## **SAFETY ALERT NOTICE TO MARINERS**

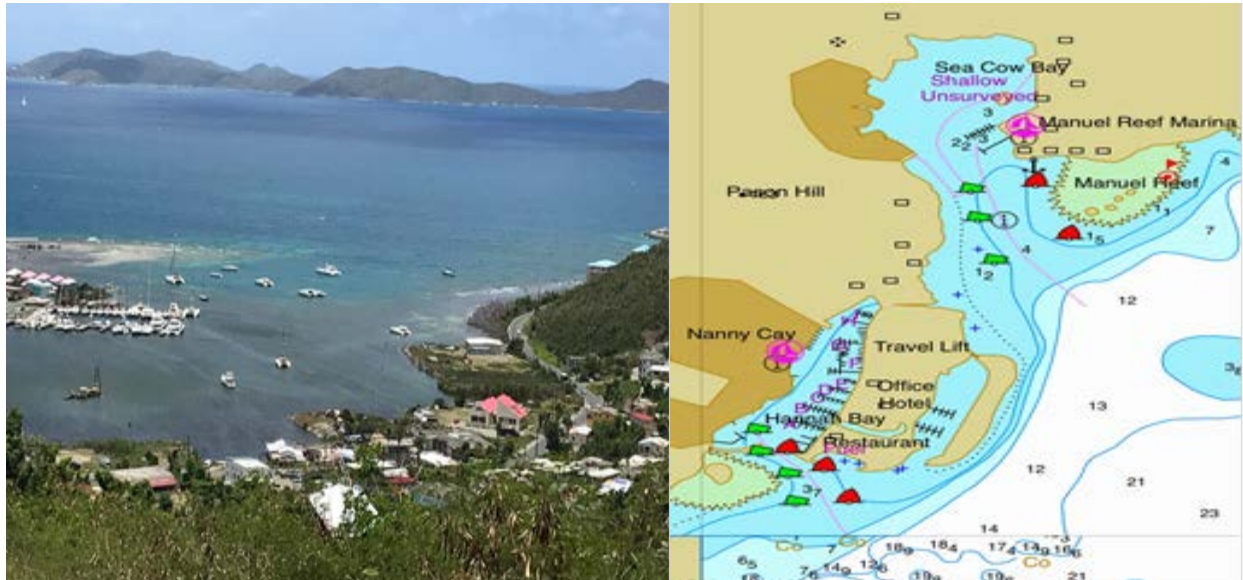
No.2/2018

**To: Owners, Operators, Brokers, Charterers, Shipping Agents, Masters, Officers and Crew Members, Inspectors, Surveyors and Managers of Bareboat Charter Vessels and Crewed Yachts.**

### **ANCHORING IS PROHIBITED IN NARROW CHANNELS AND FAIRWAYS SUCH AS IN THE MANUEL REEF**

Mariners are reminded that it is an internationally accepted practice that anchoring is avoided in narrow channels and fairways leading into a port or marina. This promotes safety of navigation, saves lives, prevents collisions and speeds up entry and egress from ports. It has been noticed that in the approaches to Manuel Reef Marina, numerous vessels are anchored in the fairway constricting the channel and making it unsafe for navigation.

VISR recognises that the buoys to the Manuel Reef channel have been removed by hurricanes but this does not permit obstructing the channel and its approaches. Please see the images below for guidance.



Contravention of these requirements is an offence under Merchant Shipping laws, leading to serious penalties when enforced by the Marine Police.

All parties are requested to take heed of this circular and avoid anchoring in narrow channels and fairways in Virgin Islands waters in the interest of maritime safety.

Ag. Director  
Virgin Islands Shipping Registry