

# RFA LYME BAY



<b>CO:</b>	Captain Paul Minter RFA	<b>Pennant No:</b>	L3007
<b>MMSI No:</b>	235051012	<b>IMO:</b>	9240768

## KEY PERSONNEL

	Chief Engineer	XO	NAVS/OPS	Logistics Officer	MEO	SEO	Flt Cdr	OC HADR Troop
<b>Name</b>	Capt(E) Alastair Bowditch	C/O Andrew Morle	1/O Chris Ovens	1/O Stephen Ledsham	1/O Nigel Gilbert	1/O Richard Johnson	Lt Cdr Rob Kenchington	Capt Chris Swanwick

## PLATFORM OVERVIEW



1 Mexeflote Landing Platform



1 Combat Support Boat



2 PAC 24 Boats

**Ship's Capabilities** RFA LYME BAY is an amphibious landing support ship, designed to deploy troops of Royal Marines onto the beaches of an enemy shore. Her primary role means that she is also ideally suited to delivering humanitarian assistance. Her shallow draft allows her further inshore than other ships of her size; and once in position, she can deploy her flotilla of small craft from the floating dock within. Her large flight deck allows continuous day and night helicopter operations, and her hold can contain the troops, stores, vehicles and medical equipment to sustain and rebuild a stricken community.

**Flight Capabilities** The Ship's Embarked helicopter is a Royal Navy Lynx HMA Mk8 (Helicopter Maritime Attack), optimised for maritime search and prosecution of surface and sub-surface targets. It carries a Royal Marine Sniper team, and can be used to move small teams of personnel and light stores into remote and inaccessible landing sites. It is a radar-fitted helicopter capable of operating in all weather conditions, day and night, using Night Vision Goggles.



**HADR Capabilities** LYME carries an enhanced Humanitarian Aid and Disaster Relief (HADR) Troop consisting of 30 personnel. This includes specialist drivers, artisan tradesmen (2 Carpenters, an Electrician, a Plumber and a Mechanical Fitter), Communications specialists, Plant and Vehicle mechanics and specialist boat operators. Vehicles carried include 4 Landrovers with trailers (including Fit for Radio, Field Repair and Battlefield Ambulance variants), 2 Pinzgauer, 4 MAN 6-tonne support vehicles and 1 JCB Light-wheeled Tractor.



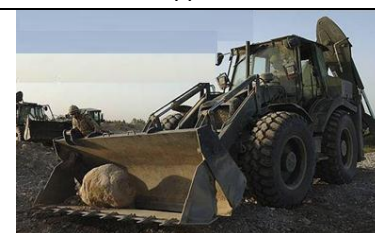
MAN Support Vehicle



Pinzgauer



Battlefield Ambulance



JCB Light Wheeled Tractor